

# QUIKLOOK Future Enhancements

Presented by:  
**Eric Solla**  
Quiklook Product Manager



**TELEDYNE LECROY TEST SERVICES**  
Everywhere **you** look™

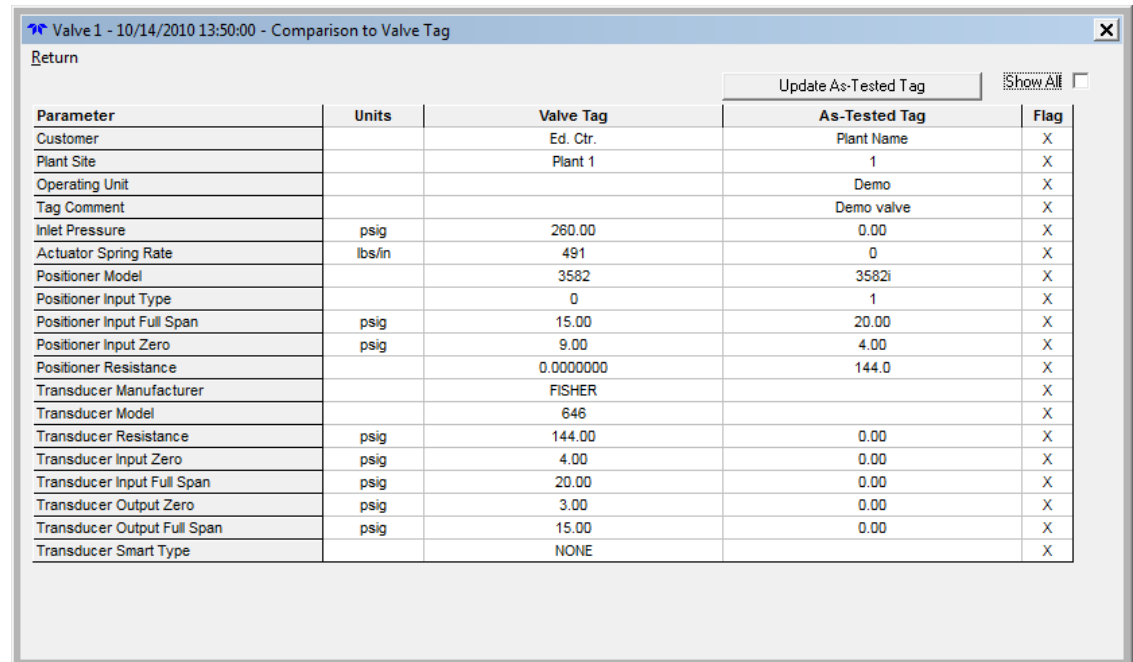
## Enhancements / Wish List

- Please fill out survey and rate each item
  - SA – Strongly Agree – We should proceed with this ASAP
  - A – Agree – We should proceed
  - NC – No Comment
  - D – Disagree – Would not use it
  - SD – Strongly Disagree – Should not be implemented at all

## Enhancements / Wish List - 1

### Compare Valve Tag Data to ACE

- Identifies Differences
- One Click Update
- Updates Test/Tag with ACE Data



Valve 1 - 10/14/2010 13:50:00 - Comparison to Valve Tag

Return

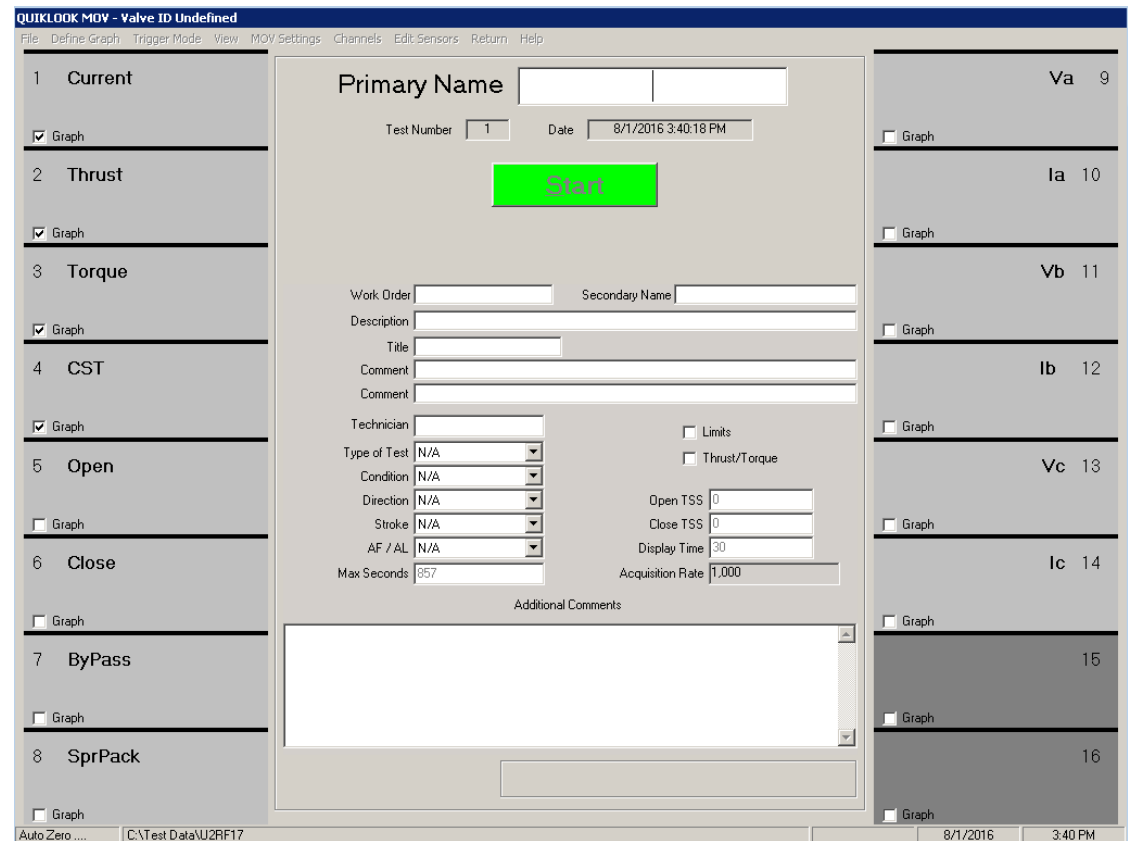
Update As-Tested Tag  Show All

Parameter	Units	Valve Tag	As-Tested Tag	Flag
Customer		Ed. Ctr.	Plant Name	X
Plant Site		Plant 1	1	X
Operating Unit			Demo	X
Tag Comment			Demo valve	X
Inlet Pressure	psig	260.00	0.00	X
Actuator Spring Rate	lbs/in	491	0	X
Positioner Model		3582	3582i	X
Positioner Input Type		0	1	X
Positioner Input Full Span	psig	15.00	20.00	X
Positioner Input Zero	psig	9.00	4.00	X
Positioner Resistance		0.0000000	144.0	X
Transducer Manufacturer		FISHER		X
Transducer Model		646		X
Transducer Resistance	psig	144.00	0.00	X
Transducer Input Zero	psig	4.00	0.00	X
Transducer Input Full Span	psig	20.00	0.00	X
Transducer Output Zero	psig	3.00	0.00	X
Transducer Output Full Span	psig	15.00	0.00	X
Transducer Smart Type		NONE		X

## Enhancements / Wish List - 2

### Desktop Configuration

- Eliminate old configuration form
- Configuration done using acquisition screen
- Start Button disabled since on desktop
- One consistent method for doing configurations for both desktop and field



The screenshot displays the 'QUIKLOOK MOV - Valve ID Undefined' software interface. The main window is divided into several sections:

- Left Panel:** A list of test types with checkboxes for 'Graph' acquisition:
  - 1 Current (Graph checked)
  - 2 Thrust (Graph checked)
  - 3 Torque (Graph checked)
  - 4 CST (Graph checked)
  - 5 Open (Graph unchecked)
  - 6 Close (Graph unchecked)
  - 7 ByPass (Graph unchecked)
  - 8 SprPack (Graph unchecked)
- Central Form:** A configuration form for a test run:
  - Primary Name: [Text Field]
  - Test Number: [1] | Date: [8/1/2016 3:40:18 PM]
  - [Start] Button (highlighted in green)
  - Work Order: [Text Field] | Secondary Name: [Text Field]
  - Description: [Text Field]
  - Title: [Text Field]
  - Comment: [Text Field]
  - Technician: [Text Field]
  - Type of Test: [N/A] | Condition: [N/A] | Direction: [N/A] | Stroke: [N/A] | AF / AL: [N/A]
  - Max Seconds: [957]
  - Limits: [ ] | Thrust/Torque: [ ]
  - Open TSS: [0] | Close TSS: [0] | Display Time: [30] | Acquisition Rate: [1,000]
  - Additional Comments: [Text Area]
- Right Panel:** A list of valve IDs with checkboxes for 'Graph' acquisition:
  - Va 9 (Graph unchecked)
  - Ia 10 (Graph unchecked)
  - Vb 11 (Graph unchecked)
  - Ib 12 (Graph unchecked)
  - Vc 13 (Graph unchecked)
  - Ic 14 (Graph unchecked)
  - [ ] 15 (Graph unchecked)
  - [ ] 16 (Graph unchecked)

The status bar at the bottom shows 'Auto Zero ... | C:\Test Data\U2RF17 | 8/1/2016 | 3:40 PM'.

## Enhancements / Wish List - 3

### TEDS and Unit Preferences

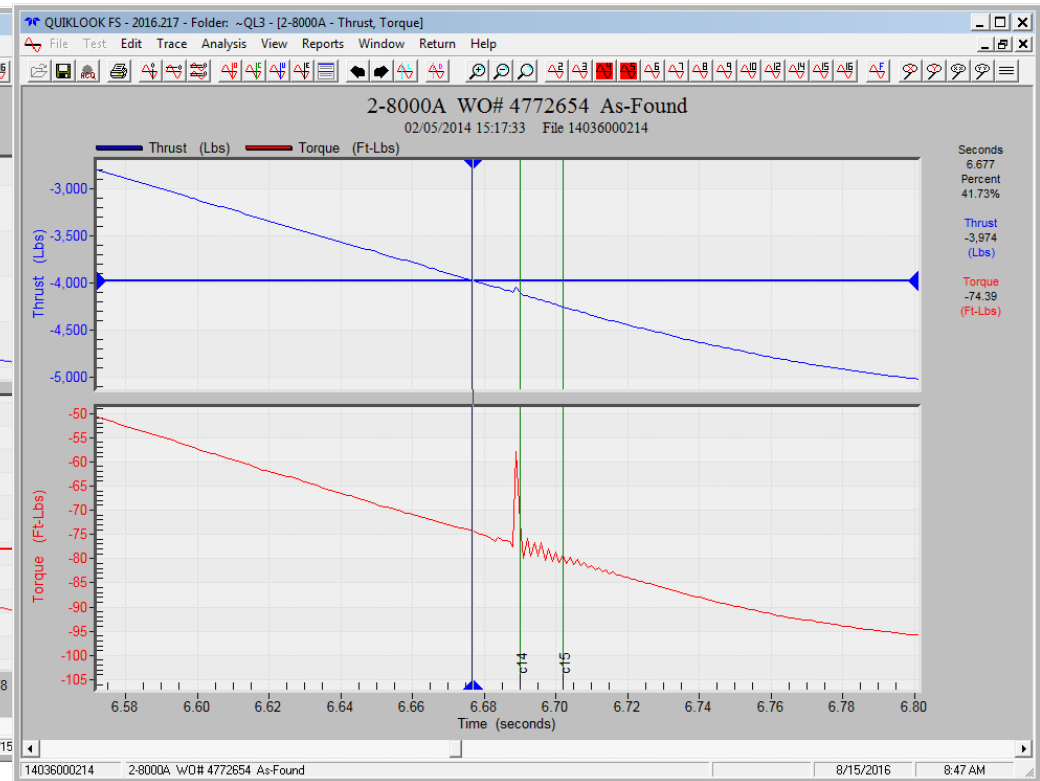
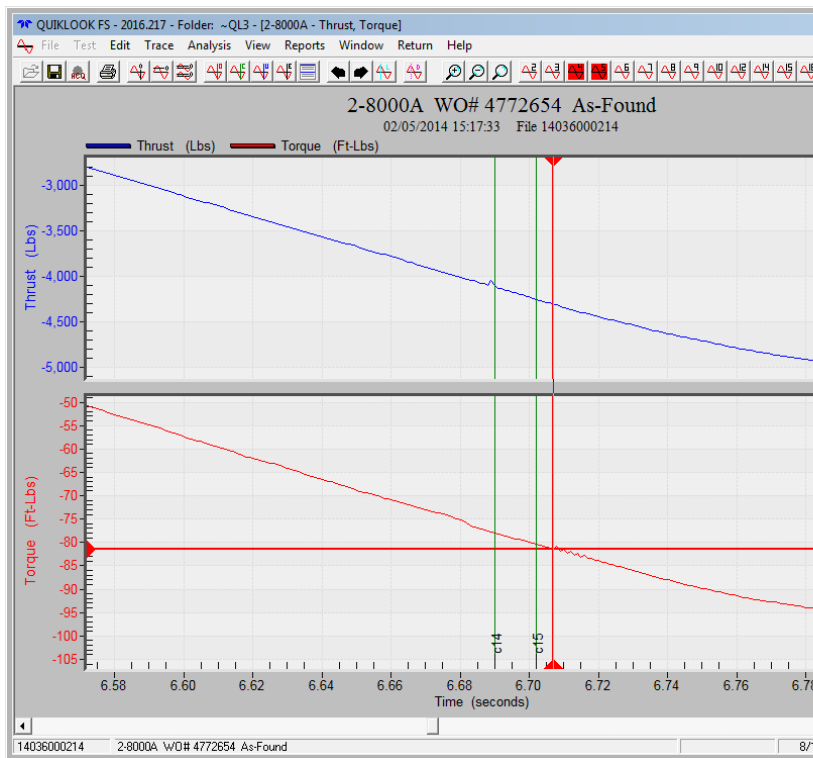
- Quiklook 2016 & previous
  - Preference set for system units – Metric / Standard
  - Sensors must match system units
  - Live graphs & inputs displayed in sensor units
- Quiklook 2017
  - Sensors do not have to match system units
  - Live graphs & displays will be in user preference units
  - Example:
    - User sets preference for “psi”
    - Plugs in one transducer calibrated in “bar” another in “psi”
    - Quiklook will display all inputs and results in “psi”



## Enhancements / Wish List - 4

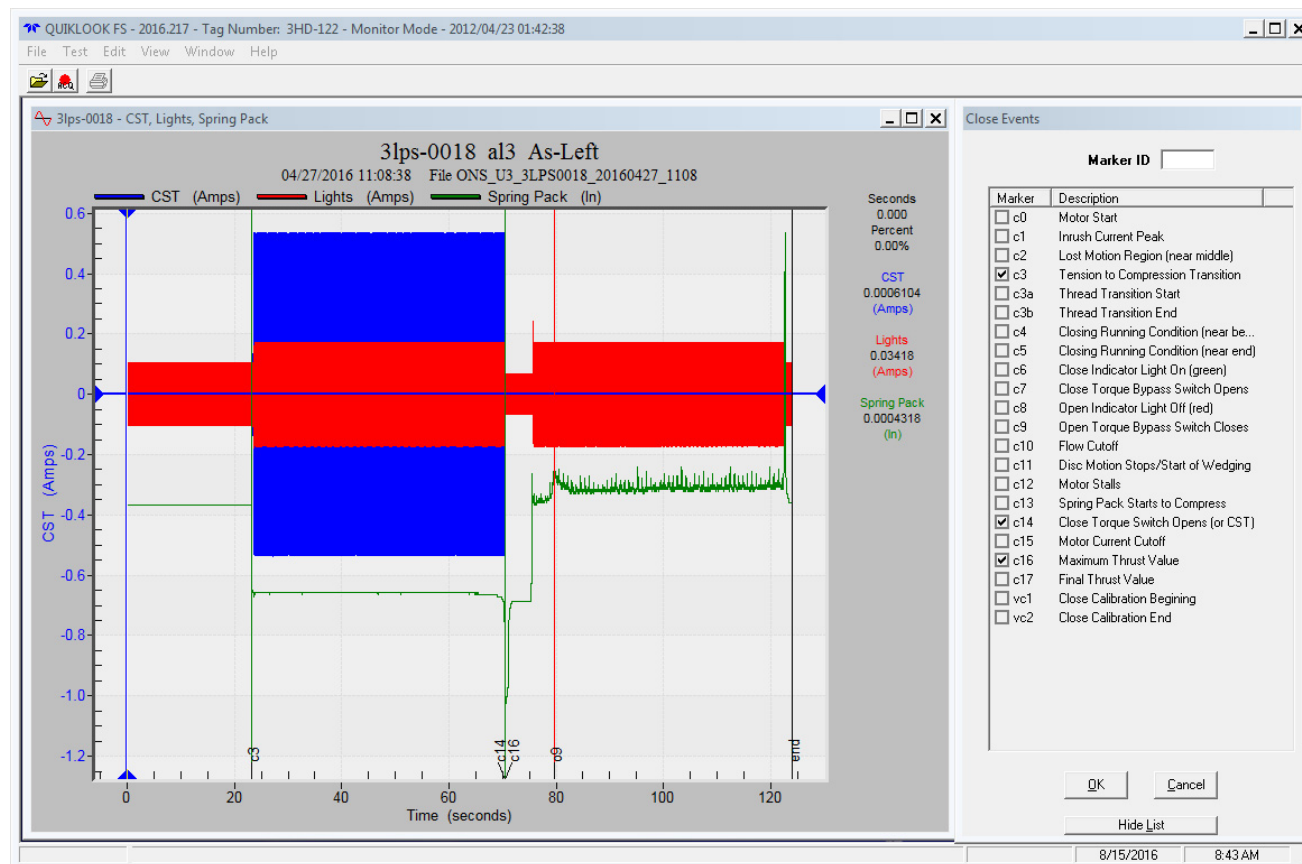
### Spike Removal Notification

- Spike removal notification on screen & reports



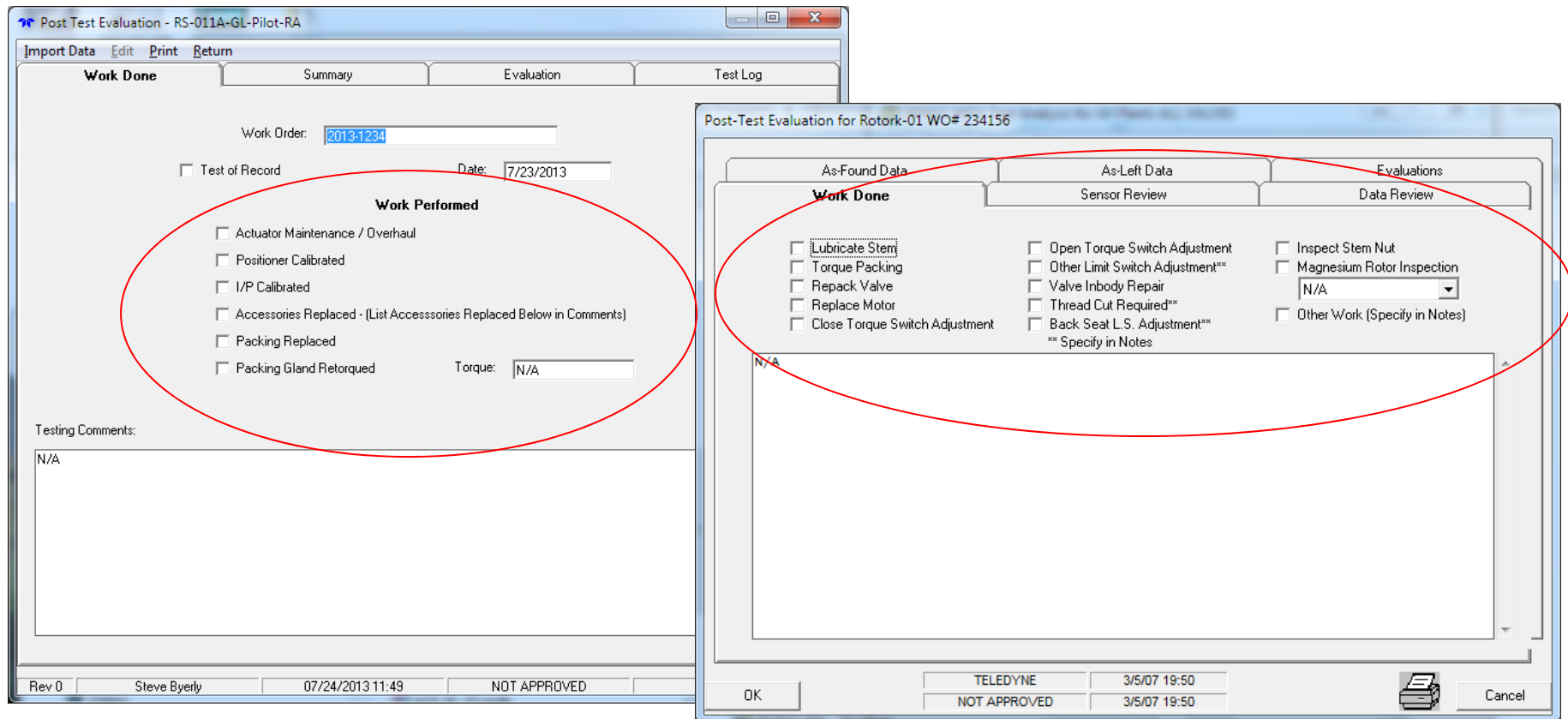
## Enhancements / Wish List - 5

### Marker List to Stay Open



## Enhancements / Wish List - 6

### ACETest / MidasTest Work Performed in Quiklook





## Enhancements / Wish List - 7

### QSS w/ TEDS

- 7 wire QSS
- TEDS chips added to QSS
- Excitation voltage measured at QSS
- Eliminates problem of reversing torque & thrust
- Eliminates potential voltage drop across connector if terminals are corroded
- Gage factor to be on TEDS chip so if QSS is swapped out sensitivity would recalc automatically



## Enhancements / Wish List - 8

### Channel Names on TEDS

- MVM channels names must be Va, Vb & Vc
- MVA channel names must be Vab, Vbc & Vca
- Channel names on TEDS chip would eliminate using the wrong channel names for Motor Power
- Other Sensors?
  - Channel names mean that sensors would be dedicated and not interchangeable
  - A current probe for CST could not be used for lights



## Enhancements / Wish List - 9

### Plug anything in anywhere

- Channel names need to be on TEDS chip
- Channel names predefined in tag file
- Plugging in extension cable no need to match channel numbers
- Can plug sensor into any cable
- Quiklook would read the TEDS chip and assign channel to channel with matching channel name
- What to do with sensors without channel names?
- What to do with sensors with duplicate channel names?
- What to do if sensor doesn't match channel name?
- Make this a preference to turn on / off



## Enhancements / Wish List - 10

### Pictures in Quiklook

- Pictures in tag file, test file or directory?
  - 10a – Pictures in directory
    - Any picture file placed in directory will show up in FlowScanner tree
    - Keeps test file size to a minimum
  - 10b – Pictures in tag file
    - Pictures that relate to the valve setup
    - Increases tag file size
  - 10c – Pictures in test file
    - Pictures may relate just to a particular test
    - Increases test file size



## Enhancements / Wish List - 10 Valve ID - Pictures in Quiklook

MOV (Default)

AOV (Default)

AOV  
Demo  
MUG  
Palo Verde Demo  
More...

Select Valve

Test 153368401

Replay

QUIKLOOK AOV - 1TV2-SRDCV-HA - Step Change

File Define Graph Trigger Mode View AOV Settings Channels Edit Sensors Return Help

1 I/P Input  
Graph

2 I/P Output Pressure  
Graph

3 Diaphragm Pressure  
Graph

4 Position  
0.0000 (In)  
SPI 30 INCH  
Graph

5 Supply Pressure  
Graph

6  
Graph

7  
Graph

8  
Graph

Tag Number 1TV2-SRDCV-HA  
Test Number 1 Date 8/16/2016 11:41:21 AM  
Start

Valve Image

Control Data

Work Order Secondary Name

Description TRAINING VALVE  
Title Step Change  
Comment  
Comment  
Technician  
Direction N/A AF / AL N/A  
Display Time 30  
Max Seconds 25 Acquisition Rate 10  
Additional Comments

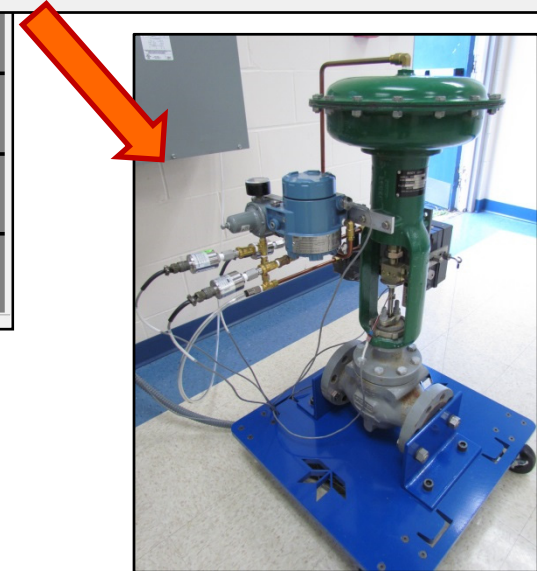
Test Setups Excitation Voltage OK

CH 70% 8/16/2016 11:46 AM

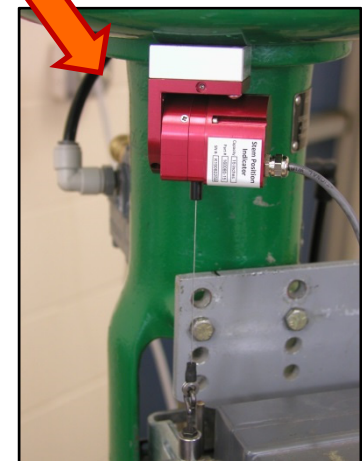
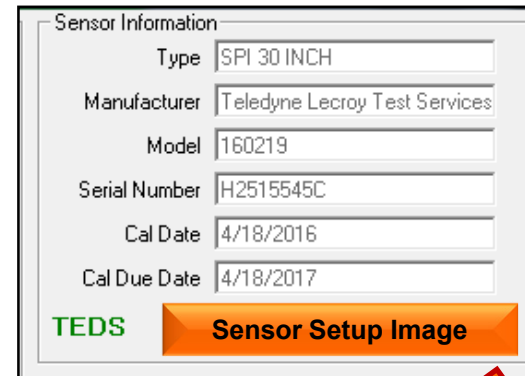
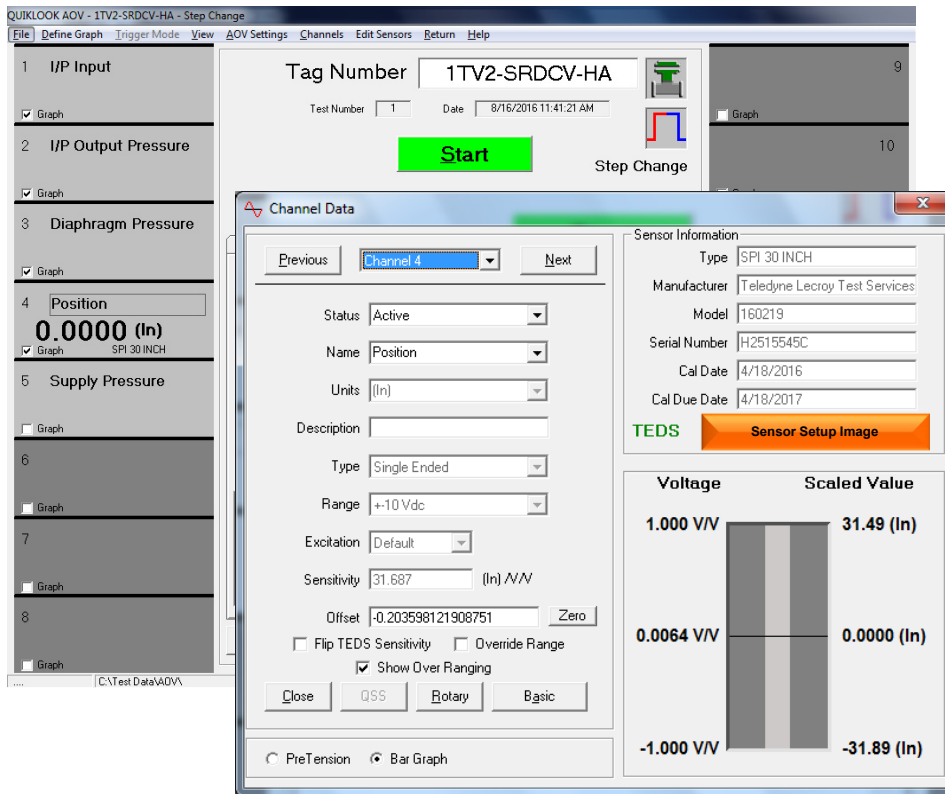
Tag Number 1TV2-SRDCV-HA  
Test Number 1 Date 8/16/2016 11:41:21 AM  
Start

Valve Image

Step Change



## Enhancements / Wish List - 10 Sensor Setup - Pictures in Quiklook





## Enhancements / Wish List - 11

### Getting Pictures into Quiklook

- Plug a camera into the Quiklook system
- Add functionality to Quiklook to import picture



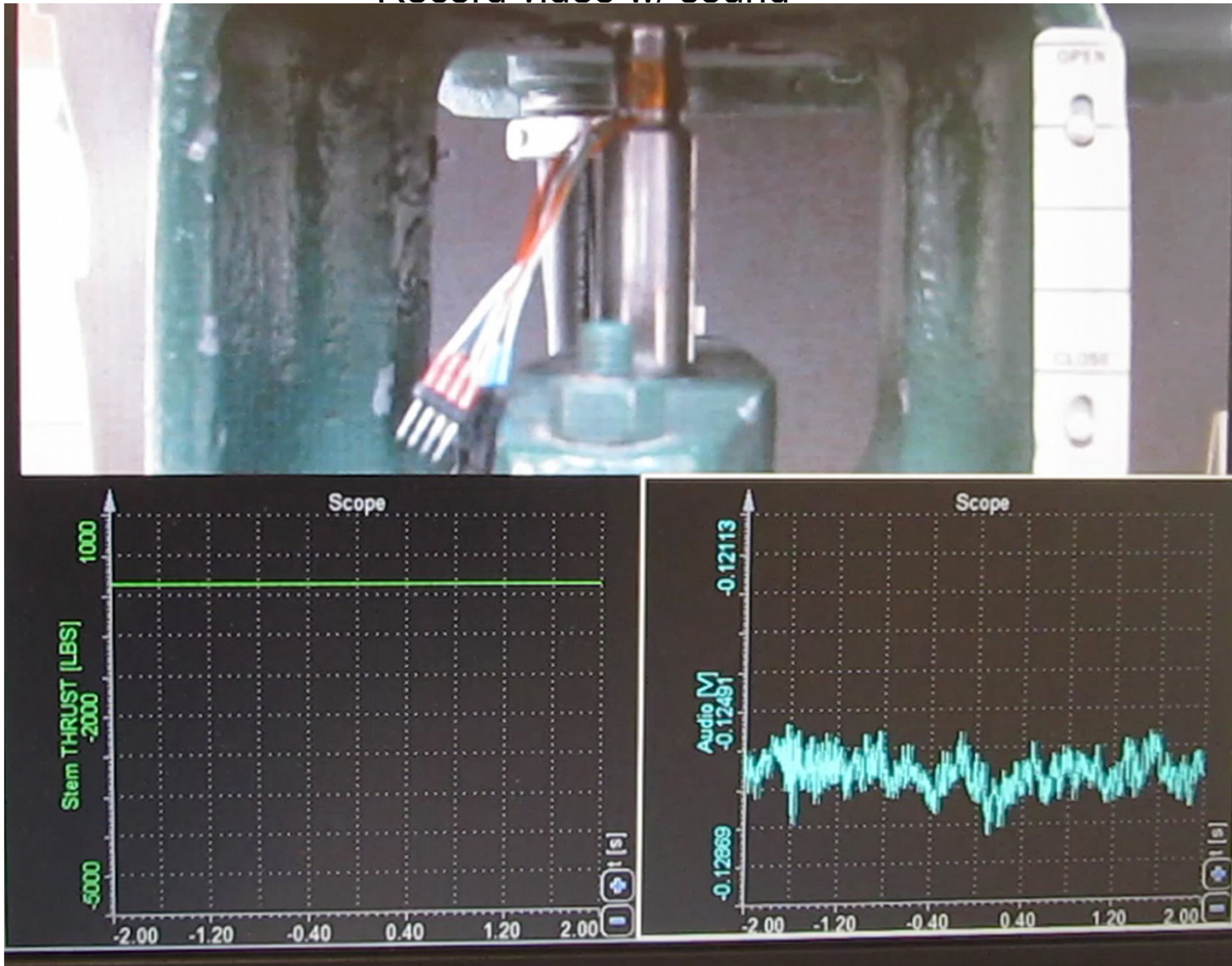


# Quiklook Software Update

## Enhancements / Wish List - 12



Record video w/ sound

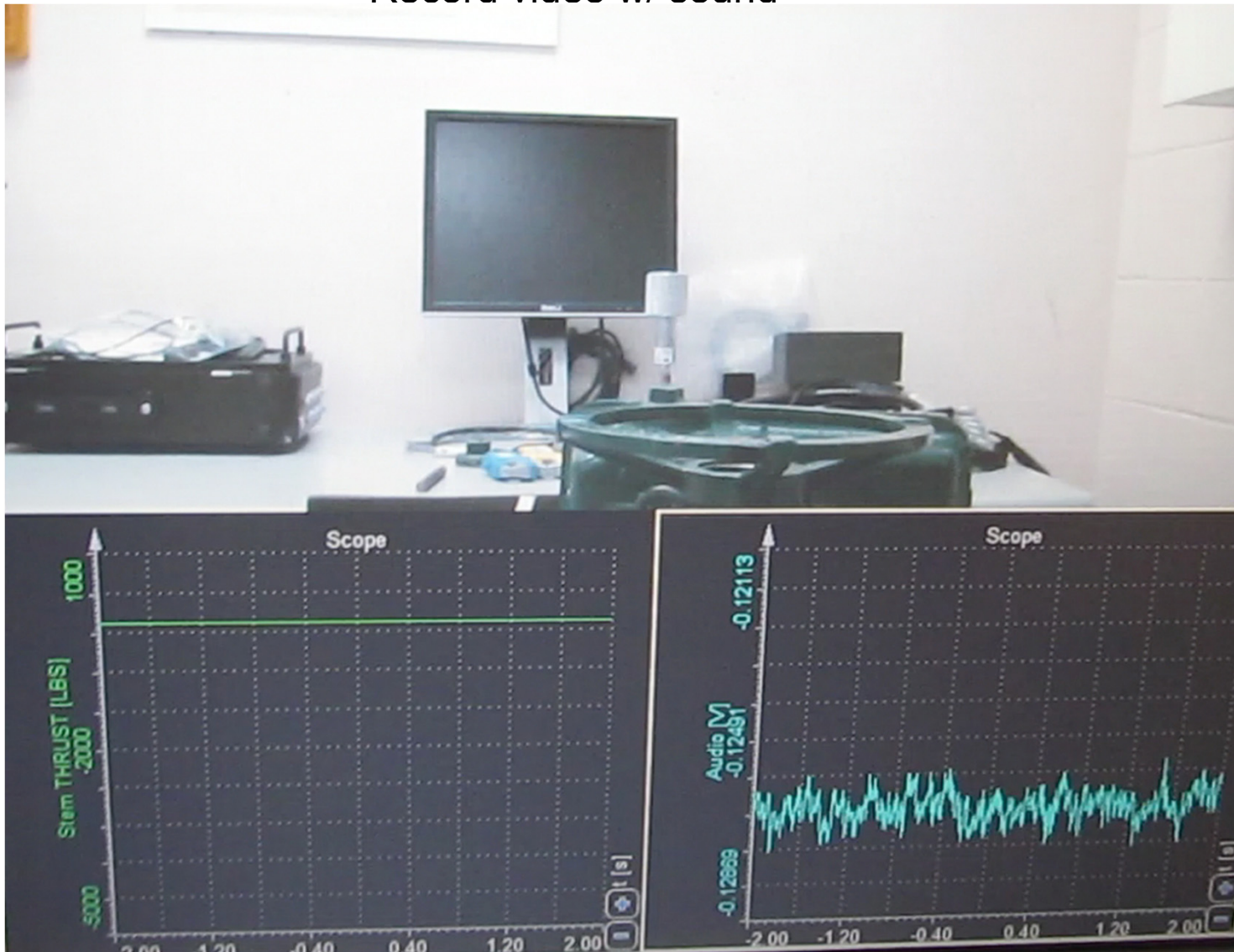




# Quiklook Software Update

## Enhancements / Wish List - 12

Record video w/ sound





## Enhancements / Wish List - 13

### Zoom Y

- Zoom Y – Being able to zoom in while in multiple pane mode





## Enhancements / Wish List - 14

### Swap Channels by Channel Name



## Enhancements / Wish List - 15

### Seat Load Indicator

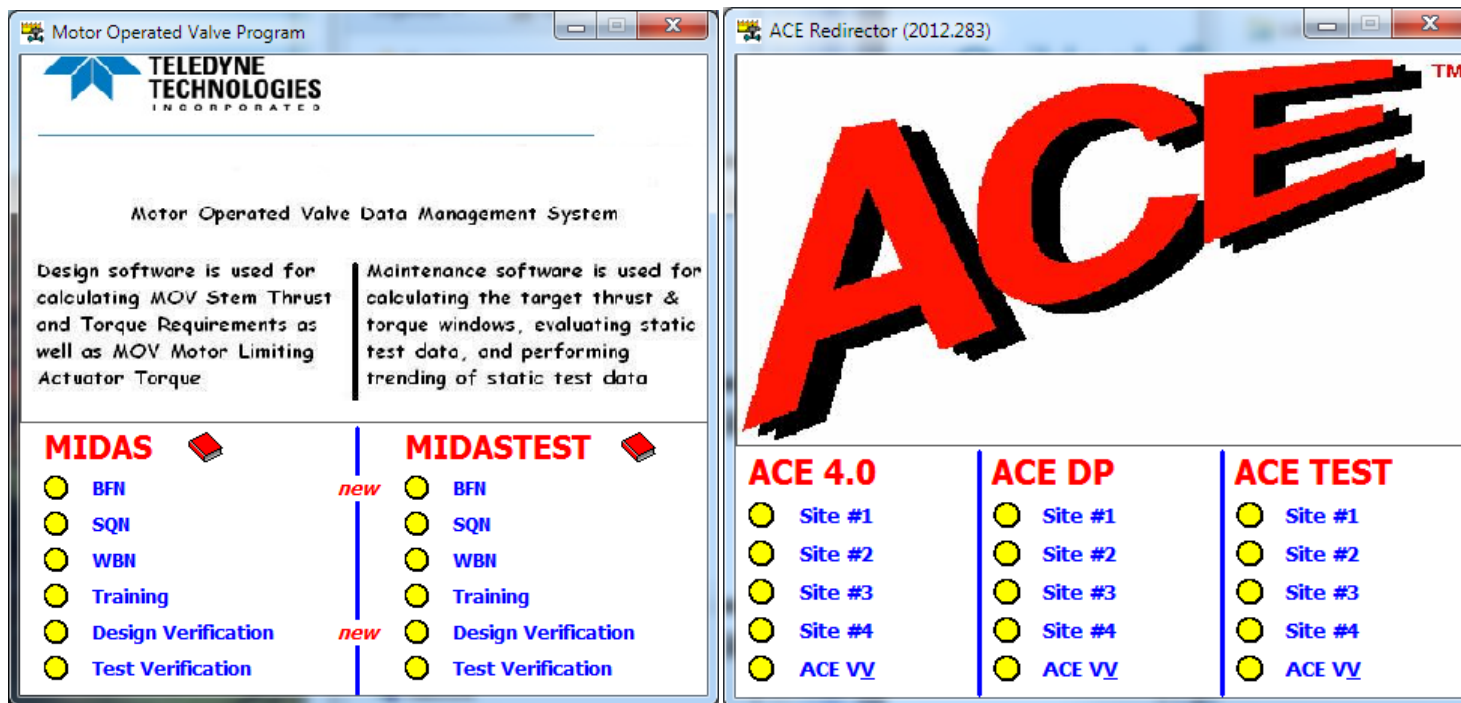
- Device would clamp onto stem
- Would show seating profile only



## Enhancements / Wish List - 16

### Midas / ACE Redirector

- One common redirector for both programs
- Include Quiklook?





## Enhancements / Wish List - 17

### Lock up System

- Have a way to physically lock up a system to protect it for cyber security reasons.
  - Lock Case / Cover
  - USB Ports
  - Ethernet ports





## Enhancements / Wish List

Any Additional Requests?



# Any Questions?

## THANK YOU



**TELEDYNE LECROY TEST SERVICES**  
Everywhereyoulook™