

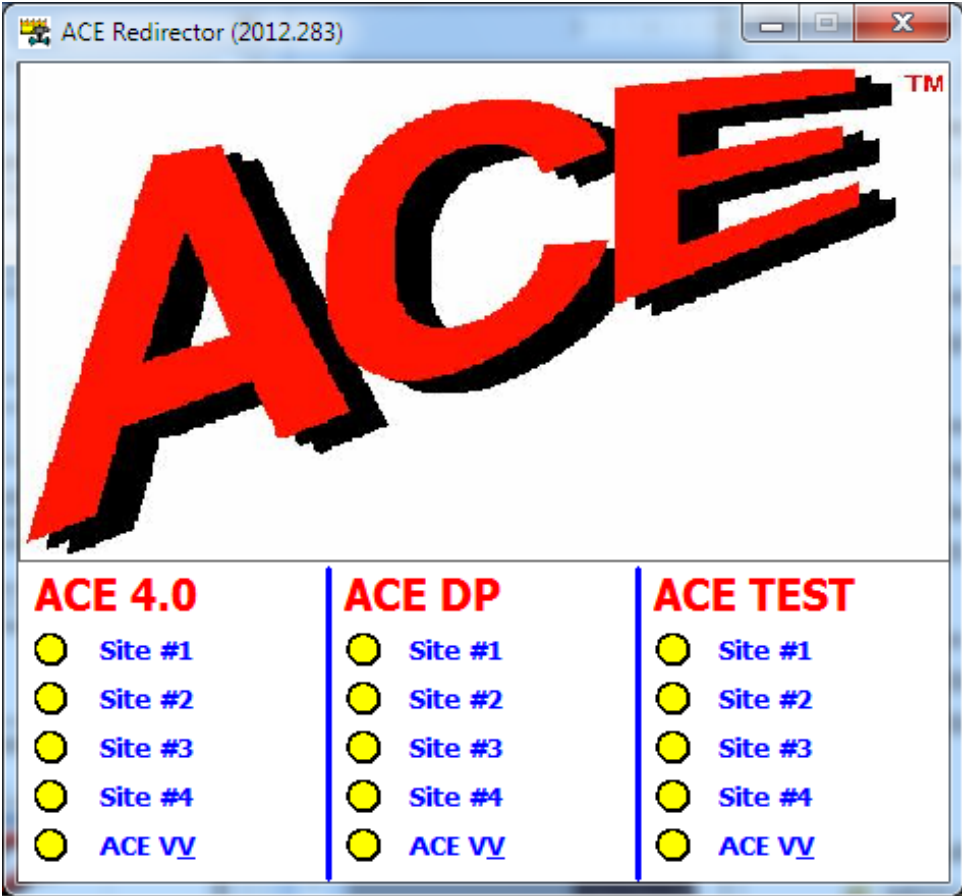
# ACE Software Suite

Presented by:  
**Eric Solla**  
Quiklook Product Manager



**TELEDYNE LECROY TEST SERVICES**  
Everywhereyoulook™

# ACE Software Suite



## Design Calculation Software ACE

**ACE Calculations**

File Edits Tables References Tools Help

ZZ-RSTESTCASE | **Globe - Balanced - Flow Over - Down to Close**  
**Diaphragm - Reverse Acting**

Packing Accessories Adjustment Factors Output  
General Configuration Valve Actuator

Parameter	Dir	Value	Ref
Calculation Number		Unknown	1
Calculation Revision		0	1
System		011	959
Name		Name	970
Fail Position		Close	981
Media		Water	992
Flow Diagram / P&ID		P&ID	993
Max. Fluid Temperature (Deg F)		100	948
Line Pressure Upstream (psig)	(C)	200.00	970
Line Pressure Upstream (psig)	(O)	100.00	970
Line Pressure Downstream (psig)	(C)	20.00	992
Line Pressure Downstream (psig)	(O)	10.00	981
Category		1	993
Air System Name.		Air System	948
Stem Material		Stainless Steel	1
Young's Modulus (E)		29,000,000	1
Poisson's Ratio (v)		0.290	1

General Comments  
Discussion on the method used to determine the line pressures. - LP Discussion

Eric Solla | 10/10/2011 19:09 | NOT APPROVED | N/A

## Test Analysis Software ACETEST

**ACETEST for All Plants - ALL VALVES**

File Tables Tools Help

BFN-1-PCV-001-0153 | **Globe - Balanced - Flow Over - Down to Close**  
**Diaphragm - Reverse Acting**

Design Data - Manual Input

FUNCTION	OPEN	Last Edit	SIGNOFF	Last Signoff	PRINT
Pre-Test		11/13/12 13:56		N/A	
Post Test Evaluation		11/13/12 13:58		N/A	

Add New Work Order

Work Order	AOVDR Rev	Status	Test Date	Test of Record
112585928	0	PreTest	11/10/2012	...
N/A	N/A	Legacy	11/11/2010	...



# DP Calculation Software ACE DP

The screenshot shows the 'ACE DP Calculations' software window. It has a menu bar with 'File', 'Tables', 'References', 'Tools', and 'Help'. Below the menu bar is a dropdown menu showing 'ZZZTESTCASE'. To the right of the dropdown are two text boxes: 'Globe - Unbalanced - Flow Over - Down to Close' and 'Air Cylinder - Spring Return - Direct Acting'. The main area contains a table with the following data:

<u>FUNCTION</u>	<u>OPEN</u>	<u>Last Edit</u>	<u>SIGNOFF</u>	<u>Last Signoff</u>	<u>PRINT</u>
Functionality Review		09/13/11 13:26		N/A	
DP Calculation		09/13/11 13:26		N/A	

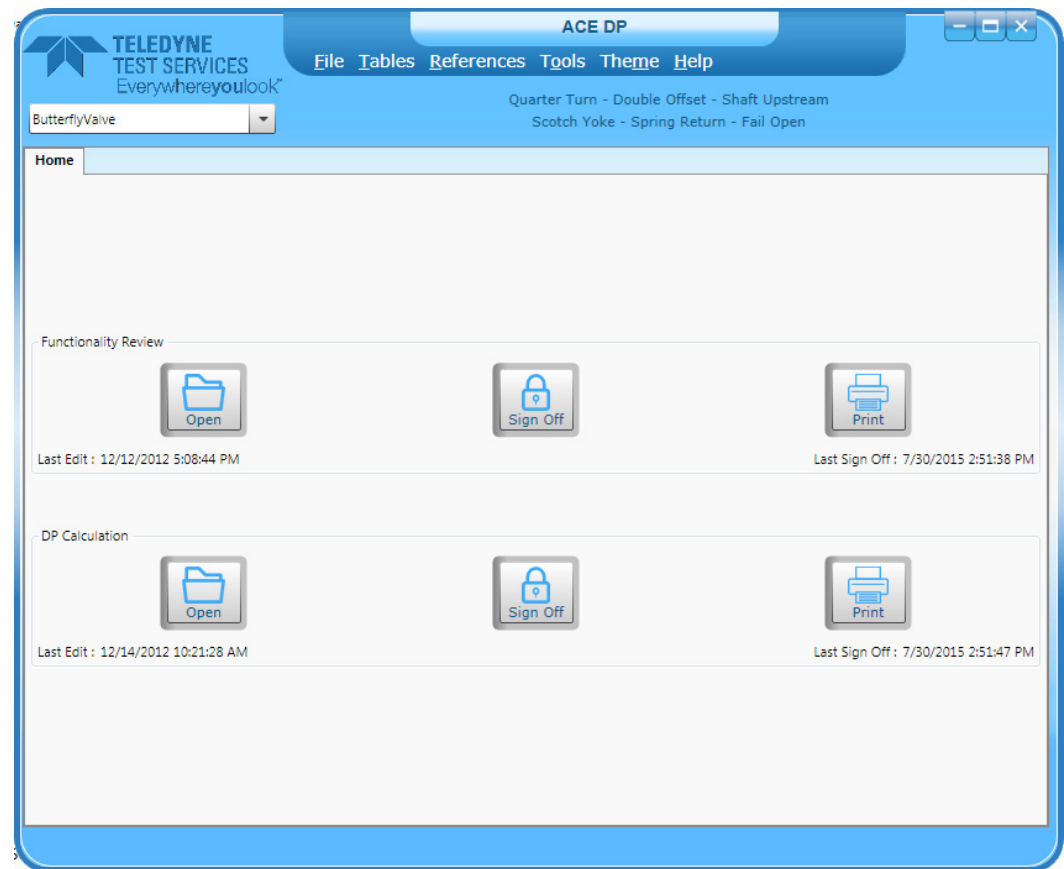
## ACE Version 5.0

- **Multiple References**
- **As-Built & Historical Tables**
- **Help File**
- **Fisher Valve database added for populating valve data**
- **Update to .net framework**
- **Incorporate New EPRI Guidelines**
  - **Not yet issued**
  - **Draft Documents Currently under review**
- **Matt Hanson – Lead Engineer for ACE**



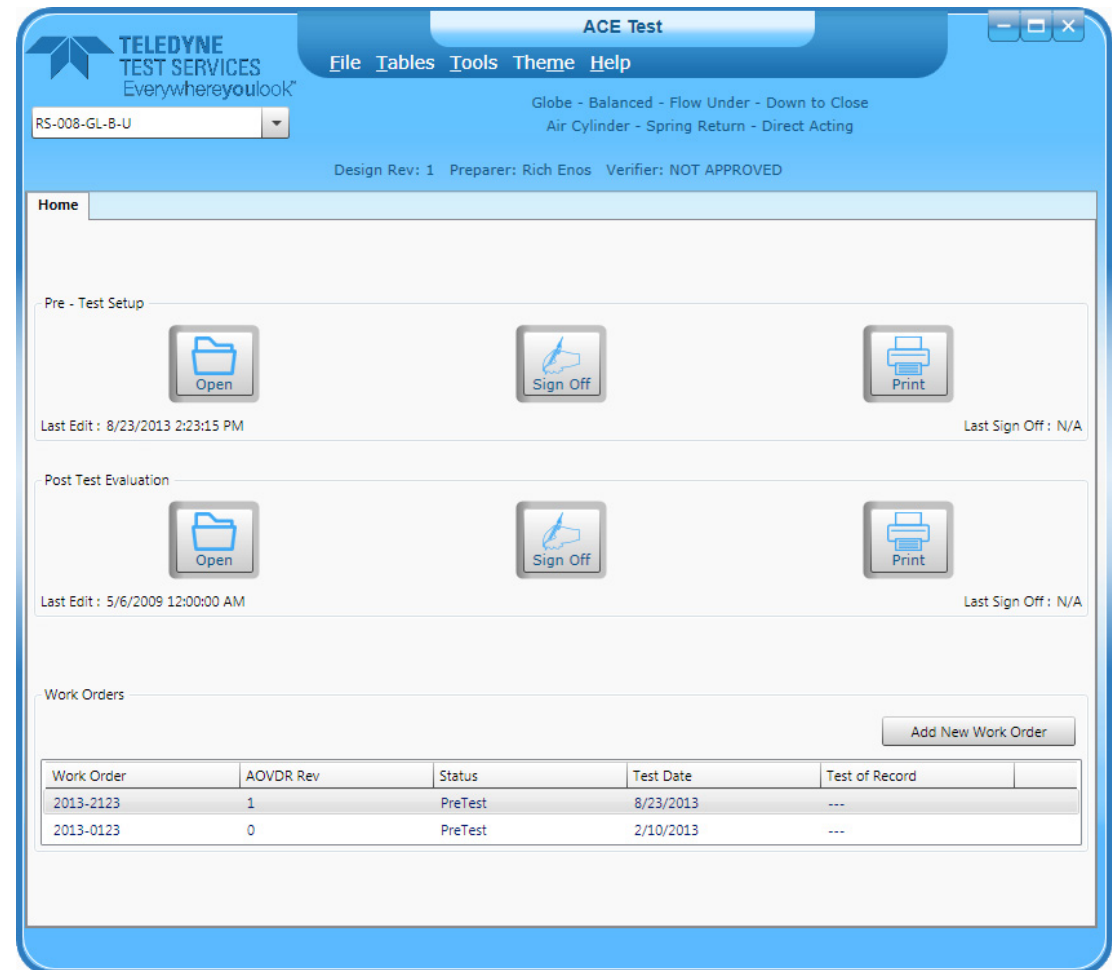
## ACEDP Version 5.0

- Updated to .net framework
  - Update complete
  - Not Verified



## ACETest Version 5.0

- Update to .net framework
  - Update in progress
  - Not Verified
- Appendix IV
- Reconcile with Quiklook





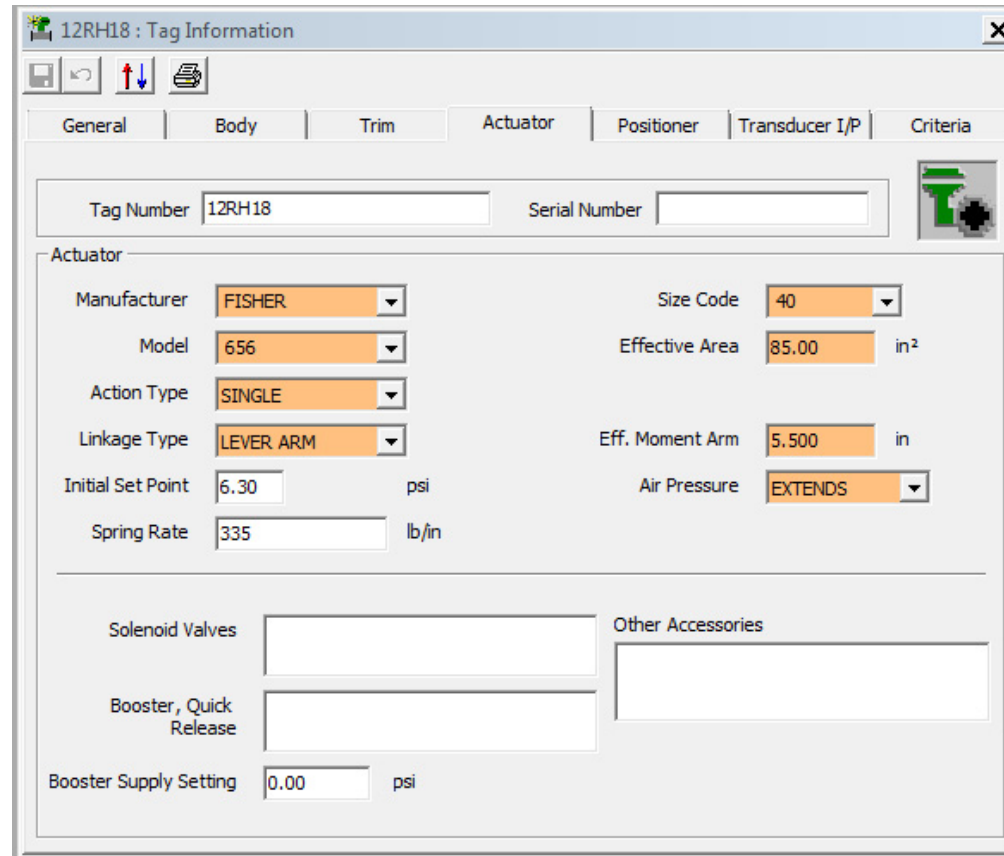
## ACE / ACETest 5.0 & Quiklook

- **Create an ACE valve from Quiklook**
- **Create a Quiklook tag file from ACETest**
  - **ACETest will include:**
    - **Test Setups**
    - **Channel Setups**
  - **Reconcile Ace / Quiklook Differences**





## FlowScanner & Quiklook FlowScanner 6.6



12RH18 : Tag Information

General | Body | Trim | Actuator | Positioner | Transducer I/P | Criteria

Tag Number: 12RH18      Serial Number:

**Actuator**

Manufacturer: FISHER      Size Code: 40  
Model: 656      Effective Area: 85.00 in<sup>2</sup>  
Action Type: SINGLE  
Linkage Type: LEVER ARM      Eff. Moment Arm: 5.500 in  
Initial Set Point: 6.30 psi      Air Pressure: EXTENDS  
Spring Rate: 335 lb/in

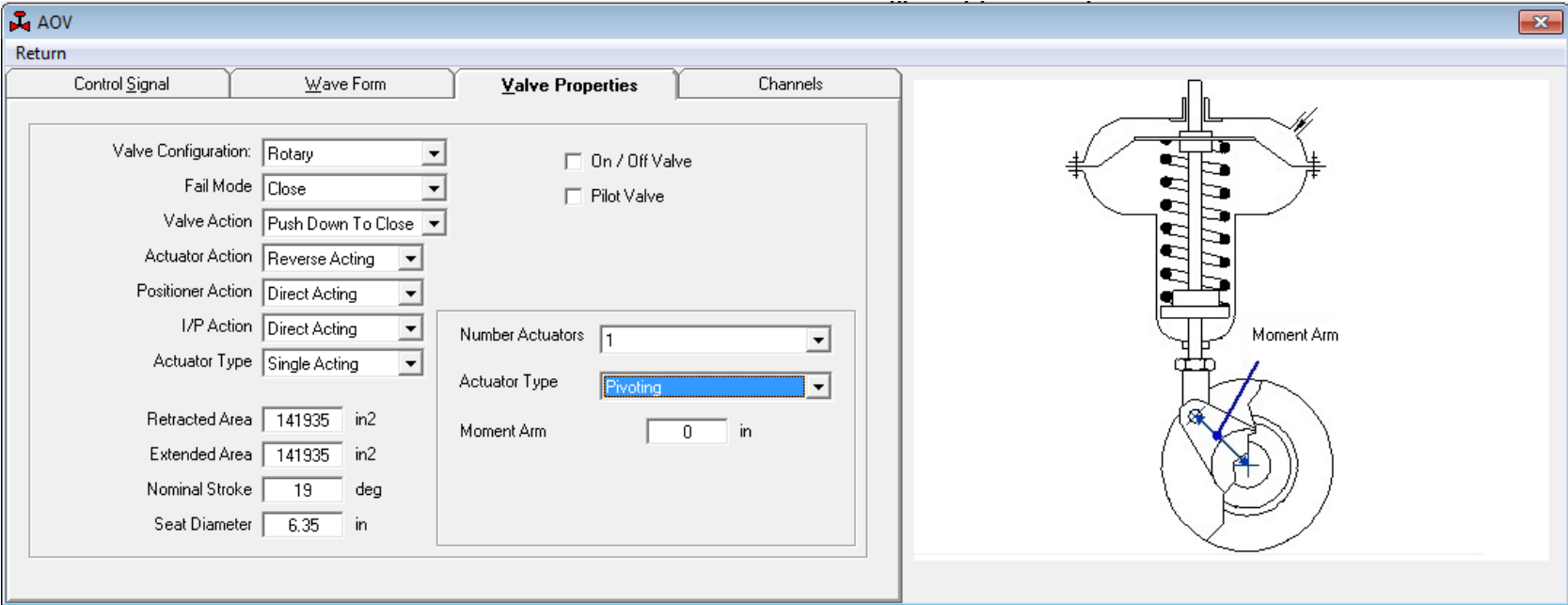
Solenoid Valves:       Other Accessories:

Booster, Quick Release:

Booster Supply Setting: 0.00 psi

## FlowScanner & Quiklook

### Quiklook 2014



# FlowScanner & Quiklook

## Quiklook 2016

Valve Explorer: Rotary 1

Return

Positioner    Transducer I/P    Criteria    Accessories

General    Body    I/rim    **Actuator**

Valve Tag: Rotary 1    Serial No: 8300002

Actuator

Manufacturer: FISHER    Action Type: Single Acting

Model: 1052    Retracted Area: 31.00 in<sup>2</sup>

Size Code: 20    Extended Area: 31.00 in<sup>2</sup>

Air Pressure: EXTENDS

Actuator Action: Direct Acting

Linkage Type: Pivoting

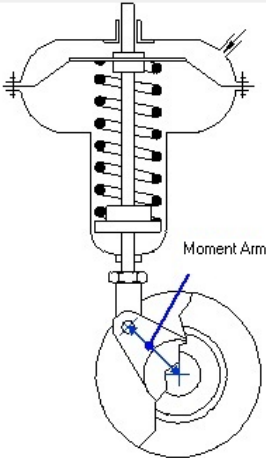
Efficiency: .00    Offset:

Number Actuators: 1

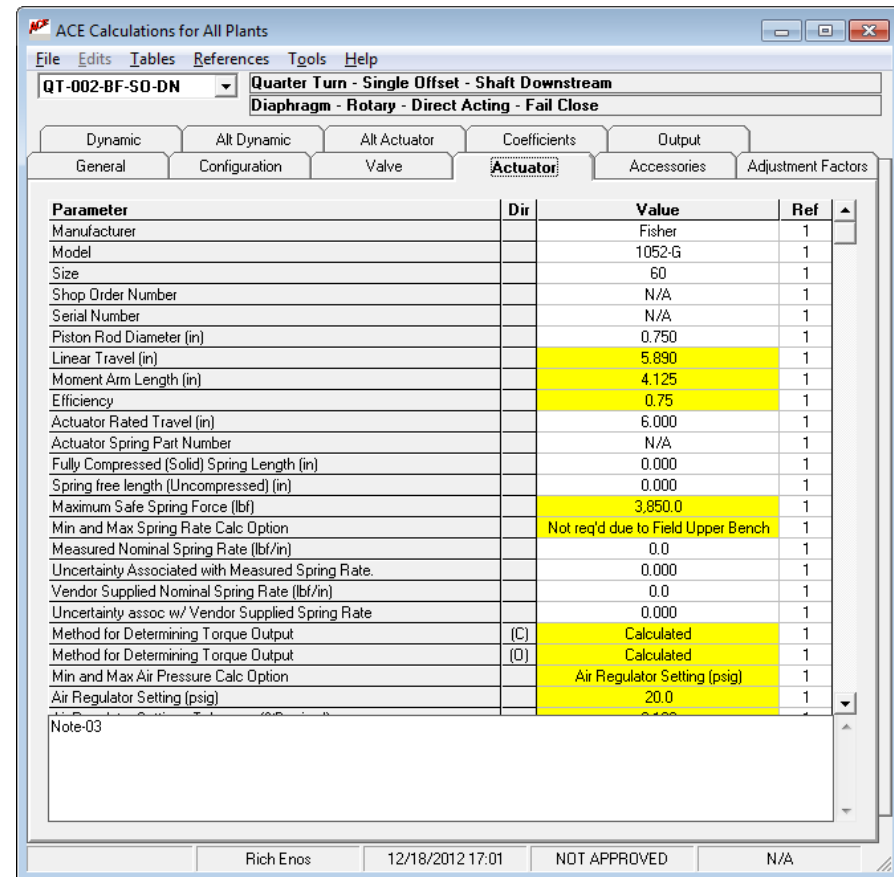
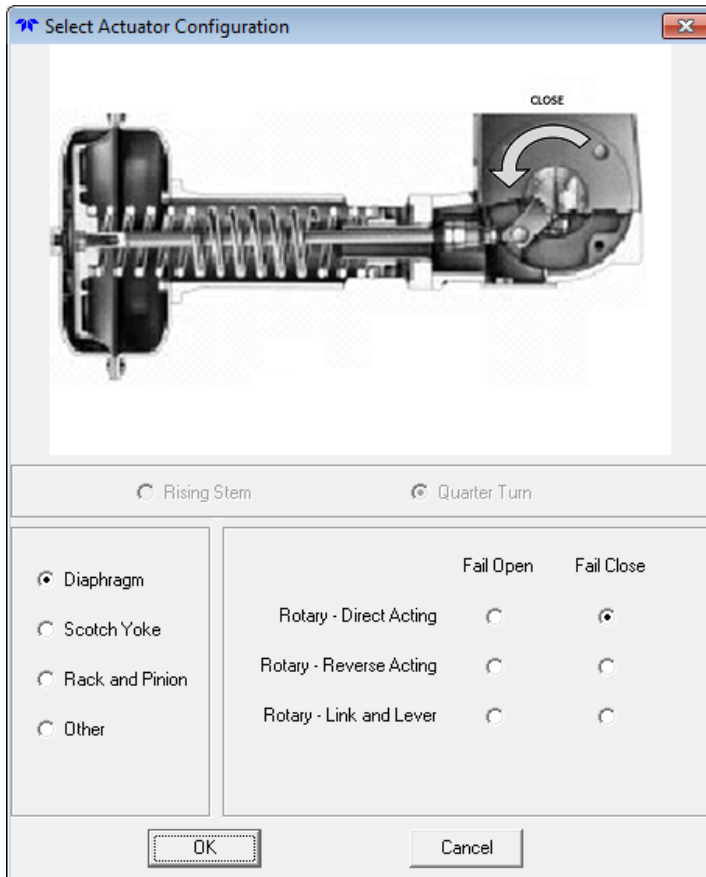
Initial Set Point:    psig

Spring Rate:    lbs/in

Moment Arm: 1.000 in



## ACE & Quiklook ACE 4.0



# Any Questions?

## THANK YOU



**TELEDYNE LECROY TEST SERVICES**  
Everywhereyoulook™